

COME THIRSTY FOR Adventure

The New Zealand beer experience is all about small batches and big taste. Arrive thirsty for adventure and leave with a taste of the good life. From golden beaches to alpine lakes, a New Zealand beer tour will take you on a journey of spectacular landscapes and wild flavours writes the Brewers Guild of New Zealand.



Monteiths Brewery, Greymouth

PHOTO: Fraser Clements



Let's start with a little history.

Beer brewing in New Zealand goes back to Captain Cook in 1770. While anchored in Queen Charlotte Sound, Cook experimented brewing with Rimu branches to ward off scurvy.

"I judged that it would make a very wholesome beer, and supply the want of vegetables, which this place did not afford," Cook later wrote.

New Zealand's first commercial brewery opened in the Bay of Islands in 1835. Early brewing styles copied familiar styles of the English immigrants - ales, porters and stouts.

The temperance movement hit New Zealand in the late 1800s. The country narrowly escaped prohibition in a 1919 referendum - with 49% of the population voting in favour of a booze ban. The prohibitionists lost, but were granted one concession - a 6pm closing time for pubs, which stayed in force until 1967.

The same year that New Zealand dodged the prohibitionist bullet, 15-year-old Morton Coutts left school to take over the brewing operations at Waitamata Brewery from his ailing father. Waitamata Brewery went on to become DB and Morton went on to revolutionise brewing globally with his invention of the continuous fermentation process.



Canyon Food & Brew Co.

PHOTO: Kate Roberge Photography

The style of beer made by this method became known as New Zealand Draught, and it was drunk by the jug-load every evening in the short window of time between knocking off work and pubs closing. While the 6 o'clock closing was in force, from 5pm bars were packed with men and beer was pumped straight from the kegs to the jugs via long hoses and taps. This ritual became known as the 6 o'clock swill and some believe that New Zealand's binge drinking culture is a hangover (sorry) from these days.

By the 1970s, New Zealand breweries had been consolidated down to two main players - Lion and DB. In the next decade, small boutique breweries began to emerge. Mac's Brewery started in Nelson in 1981 and the Shakespeare Brewery opened in Auckland in 1986.

Today, the craft beer scene is booming. In 2017, craft beer was 10% of the market and growing 22% per year.



BREWERS GUILD

Local ingredients

Beer is yeast, barley, hops and water. All things New Zealand has in abundance.

Canterbury-based barley malt farmer Gabi Michael says the climate, soil and geography make the South Island of New Zealand is one of the best regions in the world to grow malting barley. Gabi is the fifth generation of her family to supply malt to brewers. She says Gladfield's aim is nothing short of making the world's best malt.

The pristine river valleys and plains of Nelson provide the spectacular backdrop to the country's largest hop-growing region and this vital beer brewing ingredient has been cultivated there for more than 150 years. New Zealand Hops is a grower co-operative that has been driving sustainability, innovation and research since the 1950s. The company's professional plant-breeding programme has created some world firsts - including a seedless hop and selected aroma cultivars. Members export 85% of the harvest each year to more than 30 countries.

Global Inspiration

It is in the hands of passionate brewers that the best local ingredients are transformed into a staggering array of mouth-watering brews.

Today, there are around 194 breweries making more than 1600 beers. Each region has its own flavour and influences but we like to think of all New Zealand beer overall as being brewed with care - using local ingredients and global inspiration.

Many New Zealand beers have received accolades on the world stage.



Canyon's Head Brewer, Jonathan Kauri

PHOTO: Kate Roberge Photography

Each brewery has its own story and it's own history. Exploring these one by one is a worthy pursuit.

We've pulled together some highlights from around the country to help you get a taste for what New Zealand has to offer beer lovers.

BREW BUS



When you jump aboard Brewbus you're not just going on a tour, you're being taken on a road of discovery into the heart and soul of New Zealand's unique craft beer world. Where farmers and engineers, surfers and scientists, accountants and ballet dancers, amongst many others, converge with their passion to brew quality craft beer. Every brewer and brewery have their own unique and quintessentially 'kiwi' story to share about this passion and where they've come from, where they're at and where they are driven to go with their brand and their beer flavours and styles.

The art of brewing is shared with behind the scenes tours of the working breweries and an insight into just what makes that perfect pour. Of course, there are plenty of tastings of the finest along the way. Even the less beer inclined we know will find surprising satisfaction somewhere amongst the brews, whether in the refreshing sensation of a pilsner on a hot summer day or in the quiet comfort of chocolate, coffee and vanilla in the sip of a dark and mysterious stout.

A Brewbus experience seeks to immerse our guests into New Zealand's brave new world of brewing but at the same time showcasing the regions unique sights, our culture, and our local food, or kai. Our guests become Brewbus whanau, our family, as we embrace manaakitanga or hospitality, coming together to learn, experience, laugh and enjoy our time together.

We look forward to welcoming you aboard as we continue our own journey to grow craft beer tourism for the industry and become New Zealand's first nationwide craft beer tour operator. Brewbus currently operates in Tauranga, Hamilton, Taupo, Queenstown, Wanaka and Auckland with Rotorua, Wellington and Hawkes Bay coming soon. Let us take you to the beer!

Home of
60
CRAFT BEERS & CIDERS

WWW.CBK.NZ

PAIHIA
MARITIME BUILDING,
PAIHIA WATERFRONT
MARSDEN ROAD

TAURANGA
20 SPRING STREET,
OFF THE STRAND

ROTORUA
EAT STREET,
1115 TUTANEKAI STREET

MASTERTON
7 PERRY STREET

KAIAPOI
4/77 HILTON STREET

DUNEDIN
6 THE OCTAGON

Win
A TRIP TO FIJI
AND OTHER AMAZING PRIZES

BY MENTIONING "GO TRAVEL"
WHEN YOU DINE

*CONDITIONS APPLY, USE CODE: TRAVEL
SEE CBK.NZ FOR DETAILS

CRAFT BAR & KITCHEN

TAKING THE PEOPLE TO THE BEER.

We reckon it's time everyone got a taste of the rapidly emerging Kiwi craft beer scene - So our funky BREWBUS has been decked out to take you on the ultimate craft beer tour. Whether you're a craft beer novice, a crafty connoisseur, or just have a thirst for knowledge; it's time you grabbed your mates and started celebrating with us and enjoying New Zealand's unique craft beer culture.

WWW.BREWBUS.CO.NZ
+64 27 583 2484
INFO@BREWBUS.CO.NZ
BREWBUSNZ

Nelson & Tasman

This region is not only the home to Captain Cook's historic first brew and New Zealand's first craft brewery, it is also the centre of New Zealand hops growing.



Pub ~ Brewery ~ Music Venue



Open every day from 11am–Late
(except Christmas Day)

Halfway between Takaka & Collingwood
Golden Bay

Ph. 03 5259241

E. haveabeer@musselinn.co.nz

W. www.musselinn.co.nz

MOUTERE INN



NEW ZEALAND'S
OLDEST PUB est. 1850
www.moutereinn.co.nz

Take a break from the lakes,
mountains, breweries &
National Parks when you're
in Nelson this autumn.

Visit the Inn for an ever-changing
range of craft ales & local wines.
We also offer quality pub meals
every day from midday.

Take the Moutere Highway
and you'll find us in the village.



Moutere Inn, Moutere

A breeding programme has developed unique New Zealand hop varieties, many of which have become mainstays in New Zealand craft beer brewing and are in demand by brewers internationally.

Nelson-Tasman is home to 10 craft breweries and 13 brands of craft beer.

Hop Federation is a small craft brewery with a sense of adventure and a passion for making stylish beers with substance. Located in Riwaka, in the idyllic Top of the South, the brewery is surrounded

by hop growers and orchards, and a stone's throw from beaches, national parks and lots of great recreation destinations.

You'll not find an older pub in its original building than the Moutere Inn. Built back in the early 1850's, at a time when Nelson was still in its infancy, the pub serviced early settlers to the area, hop growers among them. Virtually untouched in its 170 years, the Moutere Inn became a craft beer pub back in 2008 and has served over 400 varieties in that time. With 13 ever changing taps, you'll be sure to find a tipple or two to tickle the taste buds. Now becoming as well



Hop Federation, Riwaka



Hop Federation BREWERY

Cycling, sunshine and a nice cold beer. What could be better!

The picturesque village of Riwaka is home to the award-winning brewery; Hop Federation. Established by Simon and Nicki Nicholas in 2013, the young couple escaped the hustle and bustle of city life in Auckland to set up their business in the hop growing Tasman region.

The tasting room is only a short ride off the Great Taste Trail and offers tastings of their award winning and seasonal brews on a daily basis.

Some have described their beers as both refined and confident with the core range including their Gold winning Lager that is both refreshing and delicious. However, they also have a dazzling New World Pilsner brewed solely with local hops. Indeed, many of their seasonal beers are brewed with the local hops that can be seen growing around the region. Should you be lucky enough to visit them during 'Fresh Hop' season (between March and April) then you can't leave without trying their Green Limousine IPA for the freshest beer you'll ever taste.

If 'Hop Forward' beers are more to your liking, then you won't be disappointed with their signature beer; Red IPA. Back when Simon was an avid home brewer, he created this delectable beer that is an exuberant blend of colour, flavours and aromas. Passion fruit on the nose transitions to an unexpected combination of berries, tart ruby grapefruit and toasty malt, rounded off with a satisfying, sustained finish. Now doesn't that sound enticing?

Throw in a rich full-bodied Stout, a New Zealand IPA which just surprises and delights a Pale Ale and Double IPA that won't disappoint, and you have a core range to suit all tastes.

Open daily from 11am through to 6pm except Christmas Day and New Year's Day.

Make this a 'must do' on your trip through the Tasman region!



Open 7 days: 11am to 6pm — Up to 12 beers on tap — Bottle sales

483 Main Road, Riwaka ☎ 03 528 0486 🌐 www.hopfederation.co.nz 📱 /hopfederation





Townshend Brewery, Motueka

known for its meals as its beer... and age, this is a must stop.

Over the Takaka Hill in Golden Bay, you will find the esteemed Mussel Inn - a pub, restaurant and music venue who also brew their own beer. All ingredients are locally-sourced, including water from a creek out the back and hops which they grow themselves. Try the Captain Cooker manuka beer which pays tribute to the first beer brewed, by Captain Cook, in New Zealand!

Townshend Brewery is a genuine real ale brewery. Based in the leafy green heart of the nation's hop growing region. Get the best ingredients, treat them with respect and you'll produce a great product. As well as Nelson hops, Townshend's also brews with the ancient waters of the Motueka aquifer. Being located at Motueka's best kept secret, Toad Hall, means these increasingly popular beers can be enjoyed with a fresh delicious meal. You can also take some home with you from the new TOAD Tap room.



Toad Hall, Motueka

At Richmond brewery Sprig & Fern, "craft beer" is about combining malt, hops, innovation and precision. The Sprig & Fern range of unpasteurised beer is brewed under the watchful eye of owner and master brewer, Tracy Banner, who has been dubbed the "Mother of New Zealand Brewing" and was the first Honorary Member of the Brewers Guild on NZ in 2014. She was head brewer for Mac's and Speight's before starting Sprig & Fern. Look out for the 10 owner-operated Sprig & Fern Taverns and the Little Sprig venue.

To find these breweries and many more, visit www.nzaletail.com



Founded by Martin and Kerry Townshend in 2005, Townshend Brewery has built a reputation for producing some of the countries best beers. The philosophy is simple, take the best ingredients, treat them with respect and you'll produce a great product.

Since winning Champion Brewery in 2014 the demand for the beers both locally and throughout the country has grown rapidly.

After spending the first 11 years brewing from their home in Upper Moutere, the chance to set up at Toad Hall in Motueka was irresistible. Not only was it an excuse to construct a purpose built brewery, it was an opportunity to be located at one of the leading destinations in the Tasman region.

Toad Hall is somewhat of an institution providing locals and visitors alike with Great tasting fresh food, cold pressed local juices & amazing smoothies, not to mention fresh local fruit and veges and other delicious edibles for the past 12 years. The setting is also a popular venue for weddings and celebrations, being the only South Island venue nominated in the recent Venue of the year awards hosted by Hospitality NZ.

There is an amazing garden space to enjoy breakfast, lunch or dinner and having Townshend brewery onsite helps create the perfect marriage between awesome food and great beer - lets face it what more do you need in life?

The beers on tap cover a wide spectrum of flavors and styles, the crisp and easy drinking Pouri-Lane Lager, the Black Arrow Pilsner (like the British Black Arrow Rocket, our legendary Pilsner carries a payload of flavors), the very drinkable Cathcart's XPA and the brash and loud, in your face hoppy Blitzgreig American IPA. Townshend also produce a host of seasonal 'ales of the unexpected' which ensures there is always something interesting on tap at both the Tap Room and Toad Hall.

Being situated in the leafy green heart of the nations hop growing region has other advantages... fresh hops! All the beers are made in small batches which ensures freshness (although it does mean poor old Martin works 7 days a week!).

Toad Hall and Townshend Brewery are proud to be fully off the grid, now operating on solar energy and with a large onsite garden, it means the vege on your plate has literally been picked that morning. When they say fresh food, they mean it.

Make sure you drop in and say hi next time you are in our neighborhood!



Open Daily:
8am—5pm, Tap Room open 10am—5pm
Evening Dining available Friday/Saturday 5pm—9pm

☎ 03 528 6456 📍 502 High St South, Motueka 🌐 www.townshendbrewery.co.nz





Sprig & Fern

Award-winning Sprig & Fern Brewery releases a craft beer range in innovative 888ml glass bottles.

Award-winning Nelson craft brewery Sprig & Fern is releasing a craft beer range in innovative, all-new 888ml glass packaging. The new release packaging also coincides with the release of two new products in the range, Dry Hopped Pilsner and West Coast I.P.A. The beautifully-designed bottles will start appearing on supermarket shelves across the country from the beginning of April 2019.

The Sprig & Fern 888ml glass bottles will be available in A.P.A, Dry Hopped Pilsner, I.P.A, Pilsner, Scotch Ale, Tasman Reserve, and West Coast I.P.A.

“Our customers have been asking us for a competitively priced, larger, resealable glass bottle and we believe that we have a role to play in providing a glass alternative,” says Lee Brown, General Manager, Sprig & Fern Brewery. “Ensuring that we are responding to environmental sustainability considerations is something that’s very important to us.”

“Glass is the world’s most natural and sustainable packaging and while the new glass bottle range will not be an immediate and complete replacement for our PET range, we’re excited by the potential customer reaction to our 888ml resealable glass bottles.”

The Sprig & Fern 888ml glass bottles have screw top lids for resealable freshness, and unlike the PET range, they do not need to be kept constantly refrigerated, only prior to consumption.

“Nothing is changing for our tavern customers that use the fill your own system, we are simply giving our supermarket customers the option of buying in glass, in addition to our PET range,” says Brown.

Master Brewer and Sprig & Fern Brewery owner Tracy Banner is also excited by the move into the 888ml glass range. “This move allows our products to continue to develop in presentation and the larger glass bottles allow us to push boundaries in terms of recipe development, meeting evolving consumer palates.”

Customers will easily identify the new range on the shelf with its distinctive and compelling label artwork. “Tracy selected two words to describe each craft beer in the new range and we then invited award-winning New Zealand artist Gina Kiel to design our label illustrations basing her designs on Tracy’s chosen words,” says Brown. “The illustrations really do tell a story and complement each product in the range.”

For more information go to: www.sprigandfern.co.nz

Brewers Guild Awards

In September 2018 Sprig & Fern Brewery celebrated a remarkable night at the 2018 New Zealand Brewers Guild Awards, held in their home town of Nelson.

The Sprig & Fern team brought home the largest medal haul in the brands history, a staggering 13 medals across a range of awards categories which included medals for many of the recently released glass varieties including West Coast IPA, Tasman Reserve, Soiree, and Doppelbock.



Master Brewer and Owner Tracy Banner, who was celebrating her 35 years in the brewing industry in the same week, was deservedly recognised receiving the Morton Coutts Trophy for Innovation and Achievement in the Brewing Industry. “Being consistently awarded at the Brewers Guild of New Zealand annual awards truly showcases that our core values of quality and consistency remain paramount within our team” she said, “but being personally recognised was truly humbling”.

IT'S A HOP, SPRIG & A JUMP TO YOUR LOCAL



WELLINGTON
THORNDON
PETONE
LITTLE SPRIG
SEATOUN

TASMAN
BRIGHTWATER
MAPUA
MOTUEKA
QUEEN ST (RICHMOND)

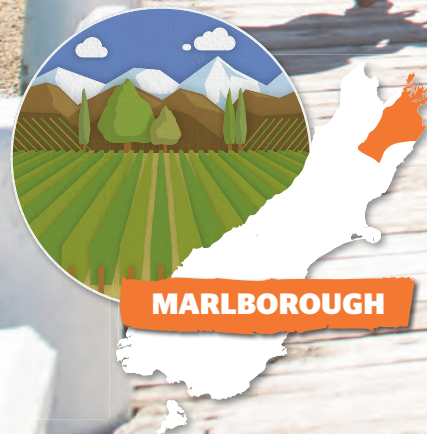
NELSON
HARDY ST
MILTON ST
TAHUNA
CHRISTCHURCH
MERIVALE

WWW.SPRIGANDFERN.CO.NZ

Marlborough

The Marlborough Sounds are a network of hidden bays and coves that make up a stunning marine playground.

PHOTO: Kieran Scott



Dodson Street Beer Garden, Blenheim

A great place to quench your thirst, Marlborough is probably best known for its wine. Now the breweries are taking the craft beer scene by storm, taking home some top international awards. Cellar doors, pubs and restaurants await your enjoyment.

Renaissance Brewing aims is to make beers that rival their grape based cousins. The award-winning brewery uses local ingredients to showcase New Zealand hops and malt in a range of British, American and European styles.

Hop on Hop off

Beer & Wine Tours

Queenstown & Marlborough Beer, Wine, Food & Wonders

0800 NZESCAPE
0800 6937 2273

While you are relaxing and enjoying some of the regions most sought after beers your girlfriend, wife or mother could be sitting next to you sampling a delicious range of wines and food. Grab a bunch of friends or get your family together for a memorable day out sampling beer, wine and food from both the Queenstown and Marlborough regions.



**Best value-for-money
tour on the market!**

Buses run in conjunction with each other for beer & wine tours.

Tour Includes:

Marlborough:

- Saint Clair
- The Wine Station
- Wine Museum
- Omaka Aviation & Classic Cars
- Wither Hills
- Golf Course
- Cork & Keg
- Gibson Bridge

- Framingham
- Vines Village
- Moa Beer
- Allan Scott
- Makana Confections
- Shotover Jet
- Canyon Food & Brew Co.
- Strike Bowl
- Arrowtown

Queenstown:

- Akarua Wines & Kitchen by Artisan
- Amisfield Bistro & Cellar Door
- Wet Jacket
- AJ Hackett Bungy
- Cargo Brewery at Waitiri Creek
- Brennan Wines
- Mt Rosa Wines

- Kinross Cellar Door & Bistro
- Gibbston Tavern
- Gibbston Valley Winery
- Gibbston Valley Cheeses
- Stoneridge Estate & Bald Hills Cellar Door
- Altitude Brewing



Café • Restaurant • Bar



Authentic German & Italian Cuisine
Kiwi Classics • Tasting Trays • All Day Menu
11am - 9pm / Tuesday-Sunday
☎ 03 577 8348
🌐 www.dodsonstreet.co.nz



RENAISSANCE
BREWING COMPANY
MARLBOROUGH

Award-winning New Zealand
Craft Beers from the heart of
Marlborough.



www.renaissancebrewing.co.nz

BREWERS GUILD



Renaissance Brewing Company, Blenheim

Eat pizza and drink Renaissance craft beer at Dodson Street, looking through to the brewery at work or enjoying the sun in New Zealand's largest natural beer garden.

Dodson Street Beer Garden, the original real ale house of Marlborough, is the Brew Pub of Renaissance Beer. Both multi-award winning businesses are located in the Historic Brewery Building from 1858, one of the oldest buildings in NZ.

With ample parking and 24 taps on offer, Dodson Street Beer Garden is a great place to enjoy some of New Zealand's top craft beer alongside an authentic 3-Nation all-day-menu menu (German, Italian, Kiwi Classics).

You'll also find Renaissance beers at the Cork & Keg. The building, one of the oldest in the region, was originally designed as a brewery. Now, this old English styled pub is a great place to spend the evening with family and friends. With a complimentary pick-up/take-home service and three newly added motel units on site, you can sit back and

Go Travel NZ • Autumn 2019

enjoy a great selection of New Zealand beers by the fire.

Based within The Vines Village along the world famous wine producing area of Rapaura Road, Golden Mile Brewing crafts a range of cycle-friendly sessionable beers perfect for celebrating that epic Marlborough bike ride. Relax on the outside sun-drenched north facing lake-side deck or take a mixed box from their cellar door.

A great way to experience the best craft beer this region has to offer is by buying a full or half day pass with on the Hop on Hop off beer and wine tours.

Also be sure to check out the annual 'A Festival Of Beer' held in October each year. Join in on a classic afternoon of both sessional & craft beers with some fantastic slow cooked BBQ food matches.

To find these breweries and many more, visit www.nzaletrail.com



Stop in for well deserved cold
beer, tasting board or takeaway
mixed pack

CRAFT BEER TASTINGS
BIKE HIRE

OPEN 7 DAYS
Ph +64 3 572 7170
193 RAPAURA RD
MARLBOROUGH
goldenmilebrewing.co.nz



Spacious motel units and
apartment with open garden
bar and cosy dining area.



33 Inkerman St, Renwick
Ph: 03 572 9328
www.corkandkeg.co.nz

Monteith's
BREWING CO.

West Coast

The wild West Coast is known for its untamed natural wilderness and the hardy people who call it home. The local tourism board boasts "sunsets so impressive Instagram told us to tone it down".



WEST COAST

Monteith's brewery began in Greymouth in the 1880s to meet the demand of thirsty gold miners. Today, Monteith's beers are hand-crafted in small batches to develop the full flavours. When each batch is ready, they employ a time honoured tradition for quality control - they taste it. The Monteith's newly refurbished brewery in Greymouth hosts a brewery experience

that will guide you through the traditions and heritage of Monteith's.

Further north, in the town of Westport, you'll find the West Coast Brewery. This brewery has been operating since the 1990's on the site of old The Miners Brewery that started in the 1950s. West Coast Brewery makes beer, cider and ginger beer and is open for Brewery Tours.

To find these breweries and many more, visit www.nzaletail.com

PHOTO: Fraser Clements



MONTEITH'S BREWING CO. WEST COAST MUST DO EXPERIENCE



TOURS



TASTINGS



KITCHEN

WEST COAST 1868 NEW ZEALAND
MONTEITH'S
BREWING CO.

DAILY TOURS AT: 11.30am - 3pm - 4.30pm - 6pm

Monteith's Brewing Co. 60 Herbert street, Greymouth • Tel: 03 768 4149 • Email: team@thebrewery.co.nz • www.thebrewery.co.nz

At Monteith's Brewing Company we love beer and cider. We are also very proud of our newly refurbished brewery here on the West Coast. Come and enjoy one of our locally brewed award winning beers. It doesn't get any fresher than this.

Join us on our brewery experience as we guide you through the traditions and heritage of our brewing establishment. You will experience and taste our ever changing and innovative brews; some of which are exclusively produced and sold here by our brewers at Monteith's Brewing Company.

Our tour starts out in the Beertopia Room which houses our very own Monteith's Museum. Here you'll get an introduction into the heritage and rich stories of the origins of Monteith's, starting in 1868 right here on the West Coast. You'll then move into the brewery to see, touch, taste (if you're up for it) and smell the New Zealand grown ingredients we use to make our range of craft beers here in our state of the art, modern brewery.

Take your time to walk through the brew house and packaging space as your expert guide talks you through the process involved with crafting our 150-year-old beer recipes as well as the modern

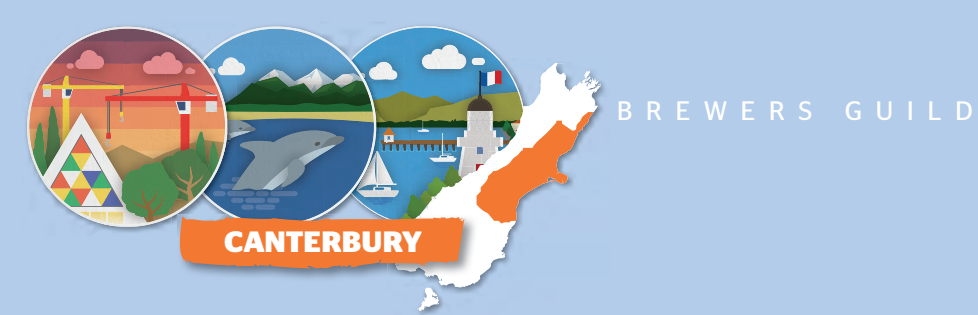
additions. You will receive video, visual and verbal prompts throughout the tour to help you understand our brewing process.

You will no doubt by this point be ready to taste the delicious range of beers and ciders right at the source. Good news for you - your tour will finish with a lesson on how to achieve the 'perfect pour'. For those over 18, you'll pour yourself your very own tap beer from our 'Brewers Table' to enjoy.

The \$25 Brewery Tour package includes a West Coast Passport full of vouchers and discounts. Enjoy 20% off vouchers to the key activities on the West Coast including Franz Josef Glacier Guides and Hot Pools, West Coast Scenic Water Tours, Shanty Town Heritage Park, West Coast Wildlife Centre and Treetop Walks.

The passport will also get you three tap beers at our bar, a complimentary beverage at various Monteith's Brewery bars, and a number of discount offers in our retail shop so you can take something home to remember your visit.

Open 7 days for meals, tastings, shopping and daily tours running at 11.30am, 3pm, 4.30pm and 6pm.



BREWERS GUILD

Canterbury

Canterbury makes up a vast chunk of the eastern South Island where surf beaches are connected to the towering southern alps by the fertile Canterbury Plains. This agricultural power-house is home to Gladfield Malts, which supplies malted barley to brewers around the world.



PHOTO: Sara Orme

56

Go Travel NZ • Autumn 2019



At the northern end of Canterbury is one of New Zealand tourism must-do's. The stunning village of Kaikoura, where the snow-capped mountains literally touch the sea and the ocean teems with whales, seals and crayfish. Amongst this natural beauty, you'll find The Craypot. As the sign outside suggests the cafe & bar is home to NZ's finest craft beer. It's handy location, on Kaikoura's main road, and relaxed atmosphere means The Craypot is a great place to unwind and enjoy some of this country's most sort after beers whilst in this stunning part of the world.

(Page 58) Otago Christchurch is New Zealand's second largest city and could be called New Zealand's newest city - 80% of the central city was demolished after the 2011 quakes. Eight years on, the new city has been repopulated with green spaces, modern architecture and a burgeoning hospitality scene. In Christchurch, you're never far from a craft beer.

The word 'Dux' is synonymous with Christchurch locals as a place to enjoy great food and brews with friends and family alike. The Dux Group, owned by Richard Sinke were one of the first brands to brew their own beer in New Zealand (1988). They have three venues across central Christchurch that are not to be missed; Dux Central, Dux Dine and Terrace Tavern.

If you looking for a decent craft selection in the South Island's biggest city then look no further than Dux Central. Their brew bar is home to truly ridiculous 200+ craft beers! The beer list is an ever-changing nirvana of beer discovery including their own Dux beers, other local boutique craft beers, and a few more well known options - there is something there for every taste. As the name suggest the craft beer bar and restaurant is located in the

AWARD WINNING BEERS

We have embraced the craft beer journey and rejoice in the freedom of being able to stock a large eclectic range of NZ craft beers from breweries throughout NZ.

Each brewery has their own unique story and we feel privileged to be able to offer them a venue where their brews can become legendary.

Enjoy the moment; make memories; treat yourself to a glass of crafted NZ beer, a boutique wine, a delicate cup of beautifully brewed tea or a cup of expertly prepared coffee.

Come and enjoy our 'hearty' home for a lunch or a dinner and taste the difference.

We offer a friendly homey, dining experience with a very free, relaxing no rush vibe.



WHERE FRIENDS AND FAMILY GATHER SINCE 1955.

70 West End, Kaikoura

(+64) 3 319 6027 The Craypot





Dux Central, Christchurch

heart of Christchurch. The venue also boasts an exceptional menu and live music!

Dux Dine is situated in a historic turn-of-the-century Villa that was originally the Station Master's House for the Riccarton Railway. The villa has been extensively but sympathetically reworked to provide a variety of spaces to be enjoyed whether you are a couple

out for date night, a large group celebration at one of the huge Kauri tables, grabbing a morning coffee, enjoying a drink in the bar, meeting friends for lunch in the sun drenched conservatory or enjoying a platter in the sheltered courtyard garden. The original homeliness of the villa has been maintained making Dux Dine welcoming and very comfortable but with many fun and quirky elements to be discovered and revealed over subsequent visits.



Dux Central, Christchurch

200+ Craft beers
Exceptional menu
Functions venue
Live music

www.duxcentral.com



Perfectly located along the Avon river, a sophisticated but casual meet place for dining, drinking and occasionally dancing!

www.terracetavern.co.nz



DuxDine
 anytime

EAT FRESH. EAT LOCAL

Seafood and vegetarian eatery complete with live music and a beer and wine garden.

WWW.DUXDINE.CO.NZ



Dux Central, Christchurch

Terrace Tavern, the latest Dux adventure on The Terrace - Christchurch's most exciting hospitality strip. Terrace Tavern is a relaxed, casual place where you can come to meet your friends, family and colleagues to enjoy beer and cocktails in the sun on the terrace and cosy dining inside during the colder months. Like Dux Central and Dux Dine, Terrace Tavern features the Dux beers alongside some more well-known options, while the wine list has a proudly biased Kiwi line-up.

Come and enjoy the famous Dux hospitality and discover your favourite spot to be.

Two Thumb Brewing began with two brothers brewing beer by the freshwater rivers of the mighty Two Thumb mountain range in the Southern Alps of New Zealand.

Hand crafted, unfiltered and unpasteurised, Two Thumb beers are batch brewed using traditional skills and techniques. Visit the Two Thumb Beerhouse Brew bar, in Central Christchurch, for a fresh craft beer straight from the brewery.

Now home to NZ's newest brewery, Volstead Trading Co. opened not long after the Canterbury Earthquakes. Located in the Riccarton suburb of Christchurch, they offer craft beers from around the world. Volstead promises to deliver one of the widest selections available and a beer to tempt any palate. These include stunning local brews, alongside award-winning national beers and famous international beers.

To find these breweries and many more, visit www.nzaletrail.com



TWO THUMB BREWING CO.

BEERHOUSE AND BREWERY

Visit our relaxed brewery bar, chilled vibe, great beer, close to Chch CBD.

Small batch, hand crafted, unfiltered craft beer right inside the brewery.

352 Manchester Street, Chch CBD
021 083 77539 • info@twothumb.com

10% OFF WHEN YOU MENTION GOTRAVEL

BEERHOUSE BREW BAR
OPEN 4-9pm Wed-Sat



Volstead

BREWERY & BAR

NEW ZEALAND'S NEWEST BREWERY

Welcome to New Zealand's Newest Independent Brewery!

Volstead Trading Company has long been an iconic craft beer destination bar in Christchurch and opened not long after the Canterbury earthquakes. This family owned business is now utilising its years of experience serving the country's finest craft beers, to run its own independent brewery onsite and serve some exciting brews of its own.

Managing Director Jason Ray says that while opening a brewery has been in the pipeline for some time, the opportunity to purchase an existing operational 1800 litre brewery right next door was a key catalyst in making the venture a reality. Another key ingredient was the appointment of well-known brewing consultant Mike Cheer as Head Brewer.

While many breweries seek to establish themselves before considering opening a brewpub, Volstead Trading Company is reversing that

approach and sees this as a huge positive. As Jason says, "Over the years we've had thousands of comments from our customers regarding the beers we've had on tap. This gives us a great idea about what our customers want to drink. Combined with the exceptional brewing skills and creative abilities of Mike Cheer, we hope to produce the brews our customers want to drink from day one".

Starting with a core range of four different beer styles, there will be frequent new releases and seasonal brews throughout the year to keep things fresh. Among other things, you can expect the brewery to produce the ever popular big and bold American style brews packed full of flavour and character, as well as great easy to drink session style beers.

Next time you are in Christchurch, make sure you visit Volstead Trading Company's bar and New Zealand's newest independent brewery, at 55 Riccarton Road, for a stunning locally made brew!



Open 7 Days ♦ 55 Riccarton Rd, Christchurch ♦ +64 3 343 6688 ♦ www.volstead.co.nz ♦ info@volstead.co.nz

Queenstown

Mountain water and an easy lifestyle define the flavour of these breweries.



PHOTO: Sara Orme

With a huge list of adrenaline-fueled activities from skiing to mountain biking, jet boating and bungee jumping, Queenstown has always been a drawcard for adventure tourism. Now the burgeoning Southern Lakes craft beer scene is also attracting attention.

Next door to one of Queenstown's most iconic attractions, Shotover Jet, you'll find the region's newest family friendly restaurant and micro-brewery; Canyon Food & Brew Co. Nestled into the canyon with spectacular views over the river, their redeveloped premises have undergone a transformation. An open, on display brewery means you can watch their award-winning beer being brewed live. With four regular brews and two rotating seasonally, their hand-crafted beers strike the perfect balance between easy drinking and interesting flavours. This restaurant and brewery is the perfect place for adventure seekers, locals and visitors alike to enjoy a casual bite or a full sit down meal.



Canyon Food & Brew Co.



Fresh & Flavourful

Canyon Food & Brew Co opened its doors last year and ever since then we've been doing what we do best - serving fresh brews and delicious food to everyone who steps foot in New Zealand's most scenic brewery.

Our state of the art brewery and open plan restaurant is nestled underneath Cavell's bridge in Arthur's Point and looks out over the mighty Shotover River. With Coronet Peak ski field right on our doorstep and Queenstown only five minutes away, we're perfectly placed for those coming down from the mountain and for those looking to get out of the hustle and bustle for a few brews on the biggest sun deck in town.

Our head brewer, Jonathan Kauri, is NZ born and bred and sets out to make the freshest brews using local ingredients. At Canyon, you'll find beer that is approachable but different, with a range of styles from all over the world perfectly crafted to complement our tasty menu.

Find us at 1 Arthurs Point Rd, Arthurs Point 9371

☎ 03 442 8692 🕒 Open daily, 11am—Late

🌐 www.canyonfoodandbrew.co.nz 📱 📺



Altitude Brewery, Queenstown

On the outskirts of Queenstown, Altitude Brewing's heart is in the mountains. Sipping down one of their beers is a great way to finish off an adrenaline-fueled day, something you're bound to have plenty of in this region! Started in 2013 with their now-

famous Mischievous Kea IPA, named after a cheeky mountain parrot, Altitude now stocks around the country. You can visit their picturesque lakeside brewery and taproom at Frankton Marina.

ALTITUDE
brewing

BREWED FOR ADVENTURE

Head to our lakeside brewery and tap room for tall stories and great beers.

827 Frankton Road, Queenstown
WWW.ALTITUDEBREWING.CO.NZ



Atlas Beer Café, Queenstown

One of the places you'll find Altitude beer is Atlas Beer Café. A firm favourite with locals and visitors alike, Atlas is a friendly, unpretentious bar, hidden away at the back of Steamer Wharf. Atlas is the place for craft beers (22 plus taps!), delicious breakfasts and lunches, fantastic coffee, amazing tapas and famous steaks.

Smith's Craft Beer House is Queenstown's only quintessential Craft Beer Free-house. Offering the best of what is available in NZ for any craft beer enthusiast. 36 rotating taps and a solid reserve bottle selection will most certainly cater to all tastes. Located on Queenstown's main high-street, Smith's manage to pull off the



Atlas Beer Cafe

📍 Steamer Wharf
88 Beach St, Queenstown
✉ hello@atlasbeercafe.com
☎ +64 3 442 5995
🌐 www.atlasbeercafe.com

Open daily from 10am

.....

Breakfast: 10am - 1pm

Lunch: 11am - 5pm

Dinner: 5pm - 10pm

Atlas



Smiths, Queenstown

seemingly impossible; making a large spacious venue comfy and intimate. Three unique seating areas cater to either large groups, friends & families or individuals. Their upstairs location means you will be blown away by one of Queenstown's best views of the Remarkables mountain range. They love brewers who go off the beaten path to create something new. Food and beer are individualistic so grab a pint, some food & forge your own favourites!

Cargo is a unique and innovative brewing company located in the stunning Gibbston Valley near Queenstown. Using shipping

containers as their framework, they have created an event space and last year planted their own hops. Cargo Brewery at Waitiri Creek offers tastings and food. There's also a beer garden with plenty of space for beach volleyball, cricket, football, croquet, badminton and even a trampoline area.

A great way to experience the best craft beer this region has to offer is by buying a full or half day pass with on the Hop on Hop off beer and wine tours.



WE ARE SMITHS.

We serve beer & food for the Smiths not the swords, for the shepherds, not the sheep.

We are Queenstown's only quintessential Craft Beer Free-house—one of the largest in the country, with 36 rotating taps!

Beer & food come in all flavours and styles, and we focus on a flavour first approach to everything we serve, with an emphasis on adventurous, creative beer & food. We enjoy beer that's not to classic style guidelines & love brewers who go off the beaten path to create something new. Food and beer are individualistic so grab a pint, some food & forge your own favourites.

A DAILY ESCAPE

Craft Beer

We enjoy beer that's not to classic style guidelines & love brewers who go off the beaten path. So grab a pint and try something new.

Great Food

Our food & beer philosophy is simple; we believe that good food pairs with good beer. There are others who will tell you about a lot of pairing rules and guidelines but they are not the boss of you!



53 Shotover Street, Queenstown • www.smithscraftbeer.co.nz

03 409 2337 • Open Mon-Sun , 12PM-Late





With the vision of offering the best beer garden in New Zealand, Cargo Brewery has become an unmissable destination for tourists and locals alike.

Cargo Brewery is a unique and innovative brewing company located in the stunning Gibbston Valley near Queenstown. Using modified shipping containers and a 125 year old Presbyterian Church as their frame work they have created an interactive and versatile space to create their award winning beers and share the beer making process with their visitors.

Visiting Cargo Brewery at Waitiri Creek is more than just enjoying food, beer and wine tasting. The venue offers acres and acres of green grass with a fun, family friendly environment. There is plenty to do during your visit with games such as cricket, football, croquet, badminton and even beach volleyball available for customers to enjoy.

With plenty of space available at Waitiri Creek, the home of Cargo

Brewery, the decision was made to pioneer hop growing in a region otherwise known for grapes. 100 hop plants were planted in October 2018 and hops will be used for fresh hop beer to be sold at the cellar door and at events.

To launch Cargo's new beer and to celebrate the end of the summer Cargo invited The Black Seeds to perform in April 2018 at their first live music concert. 2000 people enjoyed a beautiful day, great sounds and tasty beer. Cargo's reputation as an open air music venue grew as guests enjoyed gigs with Carl Cox in November 2018 and Fatboy Slim in February 2019.

Cargo Brewery has a simple philosophy as they go about their work - 'We believe in fresh, locally sourced ingredients for both our Brewery and Kitchen. We believe that people are unique and so should be the products we offer. We push ourselves by creating new recipes which will inspire and excite.'

Hop on Hop off

BEER & WINE TOURS

The best value for money beer and wine tour on the market!

A full or half day pass with Hop on Hop off is your ticket to the best this region has to offer - beer, wine, food and much, much, more...

With Hop on Hop off you have the freedom to choose not only what you do, but how long you do it for. Fancy an impromptu lunch at one of the 12 award-winning wineries? One bungy not enough to quench your adrenaline thirst? Simply wait for the next bus!

And with four breweries en route, beer lovers have the opportunity to relax and enjoy some of the regions most sought after brews.

Canyon Food & Brew Co. serve fresh, flavourful food and award-winning beer crafted onsite alongside the iconic Shotover River. With four regular brews and two rotating seasonally, their hand-crafted beers strike the perfect balance between easy drinking and interesting flavours.

Cargo Brewery at Waitiri Creek Wines has a beautifully designed open air tasting space where they tell you all about brewing

process. They always use locally and freshly sourced ingredients and you will cherish the fresh beer served straight from the tanks.

Gibbston Tavern has got more than you ask for. Situated amongst a spectacular mountain range, they have a relaxing outdoor area offering a wood fired pizza oven and garden seating sheltered by flourishing trees.

Altitude Brewing is an innovative boutique brewing company located at the Marina Heights. They have received several awards over the last few years. If you are a dedicated to good times in the mountains, these are your beers.

With a simple bus timetable to follow and several pick-up points around Queenstown, Frankton and Arrowtown its never been easier to grab a bunch of friends or get your family together for a memorable day out sampling beer, wine and food in this stunning region.

To book your tickets, please visit www.hoponhopoffwinetours.com



Open 7 days 11 am to 5 pm

Craft Brewery



Winery



Restaurant



Event Space



2323 Church Lane, Gibbston, Queenstown. Phone: 03 441 3315

cargobrewery.co.nz



Hop on Hop off

Beer & Wine Tours

Queenstown & Marlborough Beer, Wine, Food & Wonders

0800 NZESCAPE
0800 6937 2273

While you are relaxing and enjoying some of the regions most sought after beers your girlfriend, wife or mother could be sitting next to you sampling a delicious range of wines and food. Grab a bunch of friends or get your family together for a memorable day out sampling beer, wine and food from both the Queenstown and Marlborough regions.

Tour Includes:

<p>Marlborough:</p> <ul style="list-style-type: none"> • Saint Clair • The Wine Station • Wine Museum • Omaka Aviation & Classic Cars • Wither Hills • Golf Course • Cork & Keg • Gibson Bridge 	<ul style="list-style-type: none"> • Framingham • Vines Village • Moa Beer • Allan Scott • Makana Confections • Shotover Jet • Canyon Food & Brew Co. • Strike Bowl • Arrowtown 	<ul style="list-style-type: none"> • Akarua Wines & Kitchen by Artisan • Amisfield Bistro & Cellar Door • Wet Jacket • AJ Hackett Bungy • Cargo Brewery at Waitiri Creek • Brennan Wines • Mt Rosa Wines 	<ul style="list-style-type: none"> • Kinross Cellar Door & Bistro • Gibbston Tavern • Gibbston Valley Winery • Gibbston Valley Cheeses • Stoneridge Estate & Bald Hills Cellar Door • Altitude Brewing
--	--	---	--

Best value-for-money tour on the market!

Buses run in conjunction with each other for beer & wine tours.

Wanaka

The region's long reputation as a producer of excellent wine, has now expanded to include a number of craft breweries.



PHOTO: David Wall

B.EFFECT
BREWING CO. WANAKA



FOR THE SUNSET OR THE SUNRISE WANAKA LAGER IS HERE TO HELP YOU ENJOY THAT WANAKA TREE, OUR LAKE, AND THE MOUNTAINS. ENJOY YOUR TASTE OF WANAKA.

WWW.BEEFFECT.CO.NZ



B.Effect beers at Queenstown Beerfest

B.Effect is based on the idea used in chaos theory that small changes in early stages can have big effects in the end. The Wanaka-based brewery creates Central Otago Ales with wine-making techniques and Pinot Noir yeasts. Available in stores and at events around the country.

Wanaka Beerworks opened in 1998 is now an institution. The crisp and distinctive Brewski 4.8% is easily their bestseller. Wanaka Beerworks has a tasting bar and cafe with daily brewery tours.



Wanaka Beerworks



Proudly made in Wanaka and celebrating 20 years

We use pure ingredients and alpine water to create our hand crafted; micro brewed beers. In simple terms, we make darn good beer in an amazing place.



We do tastings between 11:00am and 4:30pm daily along with tours at 2:00pm. Tour bookings are recommended during the summer months.

891 Wanaka Luggate Highway, Wanaka, NZ
+64 (0)3 443 1865 | info@wanakabeerworks.co.nz
www.wanakabeerworks.co.nz



WE MAKE BEER FOR THE
BOLD, THE AUDACIOUS
AND THE GUTSY.

WE'RE BREWING ON
THE EDGE, FROM THE
GROUND UP.

VISIT US AT OUR BREWERY
AND CELLAR DOOR

4 Gordon Road, Wanaka, NZ

021 273 9464

www.groundup.co.nz



WANAKA'S PREMIUM WINE,
CRAFT BEER & SPIRIT BAR

× CRAFTED WITH LOVE ×

Located in the heart of Wanaka,
our cosy bar is the perfect spot
to meet up with friends, enjoy a
drink, and relax.

We're here for you as you are
here for us. Welcome to Cork.

(03) 443-2224

14 Helwick St, Wanaka 9305
Mon-Sun 3pm-late

BREWERS GUILD



Rhyme x Reason Brewery, Wanaka

Ground Up Brewing is a 1200 litre production brewery founded in Wanaka in 2016. Ground Up was inspired by the founder's biggest obsession (after beer) - climbing and mountaineering. Most beers are named after routes and climbs. Ground up has tasting room and cellar door at it's Wanaka brewery.

You can enjoy a Ground Up beer and many other celebrated kiwi brews at Cork Bar. Located in the heart of Wanaka this cosy bar is the perfect spot to meet up with friends

Rhyme & Reason is a Wanaka brewpub founded by brewer Jess Wolfgang. Check out their extensive beer list, all made in house. The brewpub is a place for conversation without the distractions of wifi or tv - a place to make new friends over the bond of great beer.

To find these breweries and many more, visit www.nzaletrail.com



PHOTO: Major Domo

RHYME & REASON BREWERY



Rhyme x Reason Brewery is the dream of owners Jess and Simon come to fruition. Long ago, the couple began planning their some-day brewery the way all great ideas come about; in the form of day dreams, experience, passion, and of course some late-

night plotting over a few good beers now and again. The result? A much-needed taproom & brewery in the growing Craft Beer Mecca of Wanaka.

A taproom and brewery in one, the RxR bar caters to locals and travellers alike who seek something different than the tired norm. It was J & S's intention to create an extension of their living room. A welcoming environment centred around conversation and epic beers. Along with manager Sarah, this passion-filled dream team created a hub with ever-rotating ten taps of fresh beer made on site, a core range of four tasty beers, and a seasonal profile of over 60 different brews to date. I should mention RxR opened its doors in June 2017. RxR is an experimental brewery in a 1200 litre system and creating adventurous brews for every appetite.

One of our favourites to date is the Yeehaw Habanero Saison, the White Whale of chili beers- if you will- meaning you can have a few without the heat building but rather staying at a consistent & pleasurable level. Premium ingredients are key at RxR, as we only use the finest quality ingredients to make our beer. Our Go-To Kolsch is made with premium pilsner malt and a traditional Kolsch yeast creating the freshest, crispest, and slightly fruit salad-like Kolsch you'll find this side of Cologne.

Rhyme x Reason beers are available all-over New Zealand, thanks to our epic distributor, Punky Brewster. So, get your hands on one today & visit us when you're in Wanaka for pints, take-away rigger fills, tasting paddles, and tours. Follow us on Instagram and Facebook for events and food trucks. Hold on & lean back!



PHONE (03)265-1101 OR
EMAIL HELLO@RHYMEANDREASON.BEER
17 GORDON ROAD, WANAKA 9305
WWW.RHYMEANDREASON.BEER

BREWERS GUILD

Dunedin & CENTRAL OTAGO



Featuring stunning scenery, Otago offers mountains, vast plains, dramatic rivers and remote beaches. Dunedin, the 'Edinburgh of the South' has the largest concentration of Victorian and Edwardian architecture in New Zealand

A vital supply post for prospectors seeking their fortune in the Central Otago goldfields, the impressive stone walls of The Victoria Store have stood the testament of time for nearly one and a half centuries and are now home to the Victoria Store Brewery.

Located on the banks of the mighty Clutha (Mata-Au) River and using only crisp, cold Central Otago water, the Victoria Store Brewery follows in the time-worn tradition of offering refreshment to locals and weary travellers alike.

Within The Victoria Store, the two level gravity-fed craft brewery has been designed and built using local craftsmanship. It shares this historic space with the recently redeveloped Olivers Restaurant.

Across in Dunedin, you can visit craft brew royalty at Emerson's Brewery, long known as producers of some of the country's finest beers.

Sticklers might say that Emerson's is not strictly a craft brewer since being bought by Lion in 2012, but they did keep Richard Emerson on as head brewer and, so far, their range of outstanding beers does not seem to have suffered. Add to that the opening of an Emerson's brewpub in 2016, and it is well worth a stop on your craft beer tour.

To find these breweries and many more, visit www.nzaletrail.com



A vital supply post for prospectors seeking their fortune in the Central Otago goldfields, the impressive stone walls of The Victoria Store have stood the testament of time for nearly one and a half centuries and are now home to the Victoria Store Brewery.

Located on the banks of the mighty Clutha (Mata-Au) River and using only crisp, cold Central Otago water, the Victoria Store Brewery follows in the time-worn tradition of offering refreshment to locals and weary travellers alike.

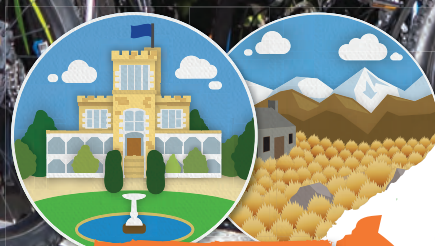
Within The Victoria Store, the two level gravity-fed craft brewery has been designed and built using local craftsmanship and shares this historic space with the recently redeveloped Olivers Restaurant.

The Victoria Store Brewery has history running through its beer lines. The names of the different brews such as the Stone Mason Pilsner or the crisp Gold Miner Golden Ale, evoke the toil of those early pioneers who struggled to make their mark on the harsh Central Otago landscape.

Stop awhile and quench your thirst or buy a box to takeaway.



PHOTO: Miles Holden



OTAGO



RESTAURANT & BAR
CLYDE - CENTRAL OTAGO

BRINGING YOU THE
FRESH FLAVOURS
— OF —
Central Otago

Fresh, clean flavours are the hallmark of cuisine at Olivers Restaurant. Featuring superb local produce.

Stay at Olivers Lodge & Stables. The perfect balance of luxury and history within 11 ensuite rooms.

+64 3 449 2805 ✉ bookings@olivers.co.nz
🏠 34 Sunderland St, Clyde 9330, Central Otago, New Zealand
🌐 www.Olivers.co.nz





Richard Emerson

THE Godfather OF NEW ZEALAND BEER

When Richard Emerson travelled to Scotland with his parents in 1983, he was first introduced to European style beers. After spending a year in Edinburgh, he returned to New Zealand and became disillusioned with New Zealand beers. This led him realising a change was needed.

Known as one of the pioneers of a craft beer in New Zealand, Richard is the founder of one of New Zealand's most loved and well known breweries, Emerson's.

Richard talks to Go Travel's Adam Shirra about his journey, the evolution of New Zealand's beer culture, and what the future holds for this ever changing industry.

What was it about your time in Edinburgh that inspired to start a craft brewery in New Zealand?

It was just more than the beer, it was a social way of life in Edinburgh. The pub was treated like a living room; with respect. I discovered that you don't call on someone's place, you meet them at the Pub. It was a very social event compared to the booze barns back in New Zealand in the 1980's, when New Zealand was still reeling from the 6 O'clock Swill effect.

Also, it was a good time for me to appreciate beer as an 18 year old lad legally enjoying fine beers in the UK, where in New Zealand 20 years was the legal age. Whoo hoo, I had a comfortable head start on my kiwi peers as well as enjoying better more interesting beers. It was an anticlimax coming back to NZ's boring lager, dark and draught beer styles, sweet and almost devoid of hops. It was enough to drive me to brew a better beer.

At that time craft beer was almost unheard of - were you at all nervous or did you see a gap that was always meant to be filled?

There were a few craft brewers around, however they were struggling to educate the market and the customers, and often they tried to compete on prices with the big boys which frankly was an unfortunate thing to do.

Even when I started, I deliberately aimed at the imported beer market with the goal of pricing below it, but staying priced above the mainstream beer market. There was no way a small brewer could make cheap beer. Our distinction was to brew the beer styles from Britain and Europe to be appreciated locally and fresh. 'Would you buy your bread from Germany?'

Education was always an on-going thing. There was absolutely no let-up, whether it was in-store at the supermarket, in the pub, or with customers visiting the brewery - education was the key. It was constant hard work.

Clearly the hard work has paid off and New Zealand's beer culture is now very different - do you think it will continue to change?

I'm pleased to say the hard work has paid off and it is so rewarding to see customers choosing beer styles they like because they have learnt something and appreciated it. One thing I've learnt is that 'change is constant'. I can see that the market will continue to evolve. Beer styles will continue to change, where originally it was 'all about the hops', now we are seeing some swings into sour beers, hoppy sour beers and surely there will be plenty of outlandish hybrid beer styles, as brewers strive to show themselves off as being different from other brewers.

I can see ourselves providing, with pride, wonderful flavoursome balanced beers that are very drinkable, while still continuing to have fun with experimental beers.

It's been nearly three years since you opened your new Dunedin brewery - what has this meant for the business and surrounding area?

The new brewery and the Taproom is one of the the best things happening in Dunedin and I feel really proud of this, and the feeling that I've 'managed to give something back to Dunedin'. In the early days I did say I wanted to 'put Dunedin on the beer map' - I think we have achieved this!

The Taproom has grown, especially when people discover that it is not just a pub, a restaurant, or a cafe - It is somewhere people can choose to do what they want to do, like have a beer, enjoy the fine food from the great kitchen team, or even try one of the new offerings from the workshop brewery.

Where do your ideas come from for your new brews and how to you go about researching, testing and developing them into the final beers?

The brewery has clearly grown, and has more staff. It was important to let the brewing team take my original philosophy going forward and creating new beer, while at the same time develop brewing skills. Researching and creating new beers is an important part of their personal development and essential in maintaining the Emerson's character in the business. I love it when they have created a lovely beer such as the Umeboshi Japanese plum beer in the Gose base beer style, it's so refreshing and wonderful straight out of the can.

Clearly brewing has been a huge part of your life, do you have time for any other passions?

I totally agree, brewing has consumed a greater part of my life and it will continue to do so with our Middlemarch 'Tap & Dough Bistro' that my wife, Norma, manages. Customers come off the Rail Trail thirsty and happy to discover Emerson's on tap, and are sometimes surprised to see the Founder behind the bar!

What have we got to look forward to in the near future?

Very soon we will have some more new beers coming out in cans. Our April release will be 'Orange Roughy' a cloudy (and I mean cloudy!), tropical pale ale that is moderate in alcohol but packs a flavor punch. And in time for the Bluff Oyster festival is "Bluffie", an Oyster Stout with a generous dollop of oysters that we personally picked up from Barnes Oysters in Invercargill, then smartly drove back to the brewery to be dropped into the kettle the next day! How this beer will raise, will remain to be seen...

Clearly brewing has been a huge part of your life, do you have time for any other passions?

I totally agree, brewing has consumed a greater part of my life and it will continue to do so with our Middlemarch 'Tap & Dough Bistro' that my wife, Norma manages. Customers come off the Rail Trail thirsty and happy to discover Emerson's on tap and sometimes surprised to see the Founder behind the bar!



TAPROOM

Taproom 10am till late. Brewery tours and tastings daily from 10.30am.

70 Anzac Ave, Dunedin | Ph 03 477 1812 | tours@emersons.co.nz | www.emersons.co.nz

Auckland

There's always something happening in the city of many lovers, as it was known to Maori - Tamaki Makaurau. The water is never far away and neither is a good beer. There are breweries scattered all around the city.



BREWERS GUILD



Little Creatures, Hobsonville



The Shakespeare Hotel & Brewery is, as the name suggests, an iconic hotel, brewery and classic pub. It is a popular go-to place for best drinks and whopping food in the heart of Auckland CBD. A great ambience and happy team carrying on a tradition of fine hospitality which began 120 years ago!

Dr Rudi's Rooftop is nestled in the Viaduct area of central Auckland. In the early 1950s, Dr Rudi Roborgh found and bred a disease-resistant hop variety known today as Dr Rudi - the world's first seedless, commercial hop plant. To continue his legacy, Dr Rudi's grandson Andrew "Red" Roborgh and friends built a brewery in his honour, where Kiwis can enjoy the very best of Dr Rudi's life-saving creation.

Liberty Brewing evolved from a home brew supply company to contract brewer and then a Brewery and Tap Room in Helensville, Auckland. Head Brewer and owner Joe Wood is known for full flavoured beer. Liberty is consistently rated one of the top breweries in New Zealand on Uptappd.

If you're already visiting Liberty in Helensville, stop by Little Creatures. Hailing from Fremantle, Australia, Little Creatures has recently opened its doors in a historic airplane hanger showcasing a micro-brewery and all-day eatery.

Sawmill Brewery was established in 2004 on the site of a 1860s timber mill. This heritage and craftsmanship still underpin the Sawmill brand, which has just become the first B Corp brewery in New Zealand. Sawmill Brewery moved to a site outside of Matakana in 2016 where you can learn more with a brewery tour or experience the best New Zealand food and drink at the Smoko Room.

To find these breweries and many more, visit www.nzaletrail.com



Welcome to the Oldest Micro-Brew Pub in New Zealand! We have been brewing on site for 40 years! No Beer tour of New Zealand would be complete without stopping off for a tasting paddle at **The Shakespeare**. With everything from a classic Munich style lager, to our stunning Aotearoa Pale Ale, we have something to suit every drinker.

LITTLE CREATURES



LITTLE Creatures BREWERY

Beer lovers rejoice! Pioneering craft beer brand, Little Creatures, has spread its cherubic wings and is now open in Hobsonville Point's sun-drenched Catalina Bay. Housed in an historic seaplane that overlooks the Hauraki gulf, Little Creatures has an extensive range of craft beers and three on-site dining options. Beers on tap include Little Creatures favourites, Pale Ale and Pilsner, as well as new additions to the New Zealand market, Dog Days and Rogers. Also available is Little Creatures Hobsonville's very own permanent release - Catalina Lager and a rotating tap of limited and seasonal releases.

As well as been spoilt for choice for beer, brewery goers can choose from a bevy of food options anchored by the Little

Creatures menu, featuring wood fired pizzas, snacks, shared plates and hearty meals. There are also two additional dining options located inside the Brewery - Salty's, serving up premium seafood dishes and Kittyhawk, a café bistro which will offer an all day dining menu, coffee and an extensive cocktail and wine list.

Coming from Auckland City? Little Creatures is an easy 25 minute Ferry Ride from the Britomart Ferry Terminal in downtown Auckland.

Embodying the quirks and eccentricities the Little Creatures brand is known for, the brewery is the perfect spot for family and friends to enjoy a craft beer and meal by the water.

" BORN OUT OF A LOVE " AFFAIR WITH HOPPY BEER



OPEN 7 DAYS | 11AM - LATE
2 BOUNDARY ROAD, HOBSONVILLE, AUCKLAND



Coromandel

Among this region's verdant hills, volcanic peaks and deep blue lakes, there is also a growing craft beer scene.

In the seaside town of Hahei, you can try Coromandel Brewing Company's British-style ales and other brews at the Pour House.

The Pour House is a family-owned craft brewery, pub and restaurant with a fun atmosphere. It is located near the world-famous Hot Water Beach and Cathedral Cove on the gorgeous Coromandel Coast.

If you're tired from days at the beach it's a great place to stop by for a bite or refreshing beer with lots of space for families and friends to hang out in the sunshine.

Anyone from the Waikato knows Good George, which came to life

after a bunch of friends got together and decided, after years in hospitality and brewing, it was time to create their own craft beer brand. Small problem, they had no idea how to brew beer. Not put off lightly, they decided to open Hamilton's first independent pub, dedicated to craft beer from New Zealand brewers. The former St George's Church was in need of attention and provided an awesome space and backdrop for the creation of a Dining Hall and Brewpub, which would eventually expand into the future brewery. Since then Good George has continued to create some of NZ's best loved beers and ciders. Doris Cider took out a trophy at the New Zealand Beer Awards in 2018.

To find these breweries and many more, visit www.nzaletail.com



COROMANDEL



THE Pour HOUSE

We have always had that kiwi can-do mentality despite being Brits. When we came on holiday here in 2004 we felt at home. Cut to four years later with two young teenage boys Jake and Harry, we decided to move to NZ for a "bit of an adventure". Within a year we quickly realised that although we loved New Zealand the beer scene was pretty bad being dominated by the Big Two. I have always been a home brewer (starting in my student days) so when we lived in the UK, Karen and I would travel to pubs looking for a good drop. CAMRA UK (Campaign for Real Ale) was our Bible and we never left home without it. After a year of living in NZ, we decided to make our own beers but it would still be just a hobby.

We soon realised that to pay for our expensive hobby we would

need to sell some of it commercially. We built a garage at the side of our house in Matarangi in the Coromandel and everyone thought we were nuts! Karen would travel the Coromandel visiting bars and restaurants and offer tastings from a chilli bin. She had a 100% success rate but, hey, she can sell and it was a pretty good drop apparently.

Several years later we could not keep up with the demand so decided to open a tasting room. We spent some time trying to find a great location and eventually came across a site in Hahei. The tasting room idea soon proved to be too difficult to satisfy legislation so we had to open a commercial kitchen and serve substantial food. The tasting room soon became a restaurant and the rest is well... now The Pour House!



The Pour House is a family-owned craft brewery, bar and restaurant with a fun atmosphere.



CONTACT INFORMATION

The Pour House
 7 Grange Road Hahei
 (07) 866 3354
 hello@thepourhouse.nz

OPENING TIMES

Monday - Sunday
 12pm - Late





BAY OF PLENTY

Bay of Plenty

The 125km of white sandy beaches will draw you to the region aptly named by Captain Cook in 1769. Today, the Bay of Plenty is known for its easy-going lifestyle, its pohutukawa-studded surf beaches, kiwifruit farms and White Island, one of the most accessible active volcanoes in the world. Tauranga has grown into a cosmopolitan beach-side city with lots to offer.

Kerosene Creek, Rotorua



For the love of B E E R

The Croucher story begins with two guys (Paul and Nigel) and a mantra “For the love of beer”.

Having separately traveled to some of the world’s great beer destinations they knew that the New Zealand beer scene could be much more interesting than it was at that time (this was in the early 2000’s). With Rotorua, their home town, known as the aromatic capital of New Zealand (if not the world), it was a perfect place to set about brewing great craft beer. “We wanted to make beers that WE wanted to drink, and for others like us.”, says Paul Croucher.

Rotorua is also the adventure capital of NZ, and this forms the backdrop of the brewery’s labels – mountain biking, road cycling, rafting, kayaking and trail running are a huge part of the local scene.

Croucher beers have won many prestigious awards over the years. In the last year alone, gold medals have been won at both the Brewer’s Guild of NZ Awards and the Australian International Beer Awards.

In 2011 they opened their own pub in Rotorua, BREW | Craft Beer Pub, as a place for locals and visitors alike to enjoy not only Croucher beers but many of the other great Kiwi craft beers too. It worked, and BREW has been named Rotorua’s ‘OUTSTANDING BAR’ for the last two years.

You can find Croucher beers in good beer outlets all around NZ, and if you are lucky enough to find yourself in Rotorua, go check out the full range at BREW | Craft Beer Pub.

As they like to say “Life is good, beer is awesome.”



CROUCHER BREWING

+64 7 348 5888 | croucher@croucherbrewing.co.nz | croucherbrewing.co.nz

You can also enjoy Croucher beers at our brewery-owned BREW pub:

📍 BREW Rotorua, 1103 Tutaneikai St, Rotorua

LIFE IS SHORT.
**BEER IS
AWESOME.**



Polynesian Spas, Rotorua

PHOTO: Fraser Clements

Mount Brewing Co. has been supplying local Mt Maunganui craft beer enthusiasts for 21 years. Mt Maunganui, the ocean, summer days, and waves are the Mount's biggest inspirations and the essence of the essence of this brewery.

Funk Estate have been brewing since 2012 and after trying a few locations decided to make "The Mount" home. You can sample beers from Mount Brewing and Funk Estate along with delicious dumplings at The Rising Tide.

Mata Brewery was founded by Tammy Viitakangas following her

overseas travels where she discovered a love of beer. Fifteen years later her new brewery in Whakatane is home to a tasting room where visitors can experience the brewing in action, enjoy a beer, be amongst the first to try new releases and meet the team behind Mata.

Croucher Brewing is born in Rotorua and loved all over. They are all about celebrating the beauty, the adventure and the hospitality that Rotorua is renowned for all around the world.

To find these breweries and many more, visit www.nzaletrail.com



Mata

BREWERY

— WHAKATANE —

If like many, you enjoy sitting in the shade on a gorgeous sunny day holding a beer that's been handcrafted on-site, then you would fit in perfectly amongst the locals of Whakatane who have a secret they are willing to share with everyone.

The Mata Brewery is a multi award winning family owned brewery located in the sunny coastal town of Whakatane in the Bay of Plenty. The Brewery was founded in 2005 by Tammy Viitakangas who began brewing after discovering her passion for great beer while travelling in Europe. Fast-forward many years, dozens of beers and hundreds of brews later, Mata Beer has become a well known and respected brand of quality craft beer in New Zealand.

Their brewery and on-site Tasting Room has 12 taps to choose from with beer ranging from easy drinking to big & hoppy or deliciously dark with changing seasonal & festive beer releases. Their 2018 festive Mata Cola Cuz was awarded the champion flavoured beer at the BGNZ Beer awards.

Along with their great beer, they also have great food like sourdough pizzas to keep your hunger taken care of. They've recently launched their first Cider too, Mata Merry Berry an apple & berry cider made using hand picked locally grown berries.

The Brewery has an off-licence so you can take your favourites home from the selection of bottles or freshly filled riggers right from the taps.

Whether you need seating for two or for 20 there are options for everyone. Welcoming to groups of all ages, young or young at heart, rest assured you will enjoy visiting this local hotspot.

The Mata team are regularly releasing new beers, hosting music nights, giving tours of the brewery, and quenching Whakatane's thirst. Check out their facebook page or contact them for further details of events & opening hours.

The people of Whakatane have spoken, Mata is their beer.



Finest Craft Beers

Mata Brewery

Come join us at the Tasting Room to enjoy our selection of award winning craft beers and delicious foods.

MATA

BREWERY

+64 7 308 9644

www.matabeer.nz

info@matabeer.nz

17 Gateway Cres, Whakatane, Bay of Plenty

Mata Beer

[matabeernz](https://www.instagram.com/matabeernz)

Hawkes Bay

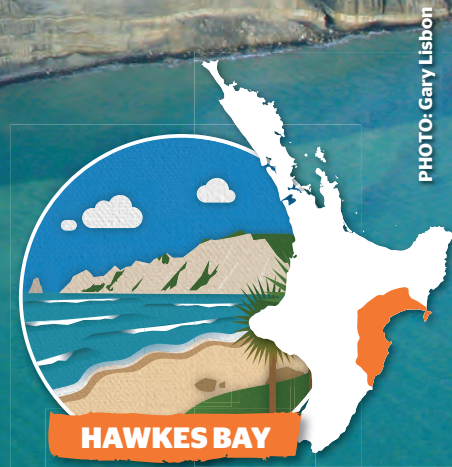


PHOTO: Gary Lisbon

Hawke's Bay is known for its sunshine, Art Deco architecture and for Cape Kidnappers, home to the world's largest mainland gannet colony. An award-winning wine and food region, Hawke's Bay has a growing number of craft breweries to add to the gastronomic mix.

Napier Brewing Company calls itself "corporate free beer" - hand crafted and all about fun. Napier's only brew pub - where you can see the beers being brewed.

Brave Brewing Co. is a small award winning brewery in Hastings with an onsite tasting room and cellar door.

Other breweries in this region include Giant Brewing, Hawkes Bay Brewing Co, Roosters Brewing and Zeelandt Brewery.

To find these breweries and many more, visit www.nzaletrail.com



Tucked away from bustle of town - a casual spot to eat that won't break the bank, yet is big on fresh flavours delivered with a smile.

Open daily, the relaxed open-air garden and comfy indoor spaces offer everything from tasty snacks to full meals. It has two great food options with the passion of PAK Asian Kitchen and the highly regarded Bistro - Serving amazing burgers, Steak and Ribs....do not forget the Bostock Organic Chicken Parma!!!

We exclusively use New Zealand Beef, Pork, Lamb and Bostock fresh organic Chicken. We use only sustainably caught fish from Hawk Bay.

Eat delicious food. Grab a drink. But most of all, relax! We thank you from the bottom of our hearts for your continued support.

Home to Hawkes Bays only fun BREWPUB Napier Brewing Company!

Napier Brewing Co has been delivering super fresh beer since September 2015, with the unique setting inside Napier's oldest licenced establishment.

With award wins at the Australian Beer awards and a strong supporter of Independent Breweries - You will also always see a great range of local breweries on tap.

Napier Brewing Co, a joint venture between Carol & Jeremy Bayliss and Paul Anderson, founder of highly rated restaurant Indigo.

We began a push to offer drinkers the ultimate in choice about seven years ago when he stocked the Westshore's fridges with about 200 different craft beers. But in the past few years, the focus has shifted to the fresher option of a regularly-changing range of tap beers, including - but not limited to - those produced on site by our own Napier Brewing Co.

Current brewer John Bradbury is into his second year and had provided a consistently to the "Regular" offering will throwing in fresh new option not just at Fresh hop season!!

The BrewBar has over 30 beers on tap and hand pump, all available to take away.

Hawkes Bays oldest Pub still operating on its original site - 1925 when the current building was established. Licenced since 1851.

Fresh Food NOT Fast Food!



**CRAFT BREWING IN HAWKES BAY.
NAPIER'S ONLY BREWPUB CALL IN
AND SEE THE BEER BEING BREWED.**



Call us on 06 650 4828 or visit our website napierbrewing.co.nz

Part of Westshore Beach Inn 85 Meeanee Quay Napier, New Zealand 4110

Taranaki

Beneath the perfectly-formed volcanic peak of Mount Taranaki lies a city with a world-class art scene and a string of black sand beaches with world-class surf breaks. When you've worn yourself out with hiking, biking, kayaking, art gazing and surfing, you can reward yourself from the growing selection of craft breweries.

Shining Peak opened

its doors in New Plymouth in January 2019. Shining Peak was founded on a passion for Beer, but also a passion for the community. It has a clear goal to nourish the community with a percentage of revenue being given to community organisations and not-for-profits.

The Thoertical Brewer started with a homebrew kit and became an obsession and now has a serves local, unique beers from its taproom in New Plymouth.

To find these breweries and many more, visit www.nzaletail.com

PHOTO: Rob Sulisted



TARANAKI

90



All good things start small.

When Doug the Chemical Engineer got a small homebrew kit from his lovely wife for his birthday, he knew immediately that this was the start of something extraordinary. Interest quickly spiraled into an overwhelming obsession, and it wasn't long before he decided it was time to take the leap of faith, and turn a dream he never knew he had, into a reality.

Many great things come from the humble beginnings of the garage.

Armed with all the knowledge that his years in university gave him, Doug put on his Home Brewer cap, and let his love for delicious beers lead the way. A small one-bench operation expanded into a sprawling multi-vessel 100L brewery, taking over the entire garage (and some parts of the living room!).

It was time to get bigger!

A second leap of faith led to the opening of the 1200L brewery and taproom in a shed on Corbett Road, where Doug the Brewer continues to brew great beers for the awesome people of Taranaki. And that's what you can count on getting when you visit The Theoretical Brewer Taproom down by Bell Block.

Get a taste of their flagship beer, The 1st Finch, with its hoppy punch and tropical flavours. Or dive straight in for their award-winning Chrysanthemum Lager, which not only won them the Gold Medal at the NZBGA 2018, but also the hearts of beer-lovers down in the 'Naki.

If you already know what you want, go get your weekend stash from their website, and they will deliver anywhere in the country. If you're in New Plymouth, though, you should definitely drop by at their Brewery, meet Doug, and have a fun chat to see what he's been up to. Sample the goods straight from the tap while you're there, then bring home bottles of bubbly goodness to share with family and friends.

At The Theoretical Brewer, the experimenting never stops. You can always expect to be pleasantly surprised.



Open 2:30pm–6:00pm Wednesday, Thursday & Friday

11 Corbett Road, Bell Block, New Plymouth NZ

www.thetheoreticalbrewer.co.nz

021 0250 2882 [fb.com/TheTheoreticalBrewer](https://www.facebook.com/TheTheoreticalBrewer)

BREWERS GUILD

Wairarapa



A region of spectacular coastlines, wide valleys and small towns, Wairarapa is known for its gourmet food, walking and cycling trails and a vibrant arts scene. Just an hour from Wellington, this region has become the place for a decadent weekend retreat.

Martinborough Brewery is a boutique brewery nestled amongst Martinborough's vineyards. The sunny tasting room has views through to the brewery

and is a great place to taste the hand-crafted beers with sharing plates of food.

At the Tui Brewery in Mangatainoka, you can learn about the brewery's 125 year history and the iconic Tui Tower with a 40 minute guided tour that finishes in the brewery bar with tastings.

To find these breweries and many more, visit www.nzaletrail.com

PHOTO: TBS Photography



Tui Brewery in Mangatainoka offers Tui lovers and new comers the chance to celebrate all things Tui and classic kiwi beer.

Experience a personalised 40 min guided tour round the Tui Brewery. You'll trace the brewery's 129-year history, get an up-close look at the progression in brewing processes and technology from the gravity feed brewing of the Tui Tower to the state-of-the-art technology in our brand new brewhouse and kegging plant. You will get to smell, see and taste the brews and their ingredients right here at the source, and you might also get the chance to meet the brewers and watch them work up close. We promise a few classic Tui laughs and a trip down memory lane with all the Tui triumphs we are famous for here in Mangatainoka.

You will finish up in the brewery bar tasting three tap beers of your choice. Additionally, you will receive a Mangatainoka Passport which includes complimentary vouchers for local hotels as well as discounts at other tourism hotspots in the Tararua District and Wairarapa region.

But don't stop there, make the most of your visit with a tasting tray of 6 Tui tap beers, some of which are brewed exclusively for Tui Brewery HQ. Recently made available in take away bottles to meet

demand, these popular drops are not to be missed.

You can enjoy something from the Tui kitchen (think tasty pizzas, the iconic F&Cs, steak sammies, seasonal pastas or tasting platters) and dine on our garden bar lawn while you watch the brewers in action.

There is even a sand pit for kids, a "Yeah right." billboard for some DIY LOLs and a game of Keg Pong to enjoy on a sunny day (yes, it's a world first and is picked to become a world phenomenon).

Travelling by campervan? We've got a dump station and potable water on site for your use, and a Park Over Property campsite right across the road on the bank of the beautiful and famous Mangatainoka River. 10% off the Tui Shop when you show your NZMCA card or Top10 Holiday Park card.

Tours run daily at 11.30am and 2.30pm. For groups over 20 people, private tours can be arranged.

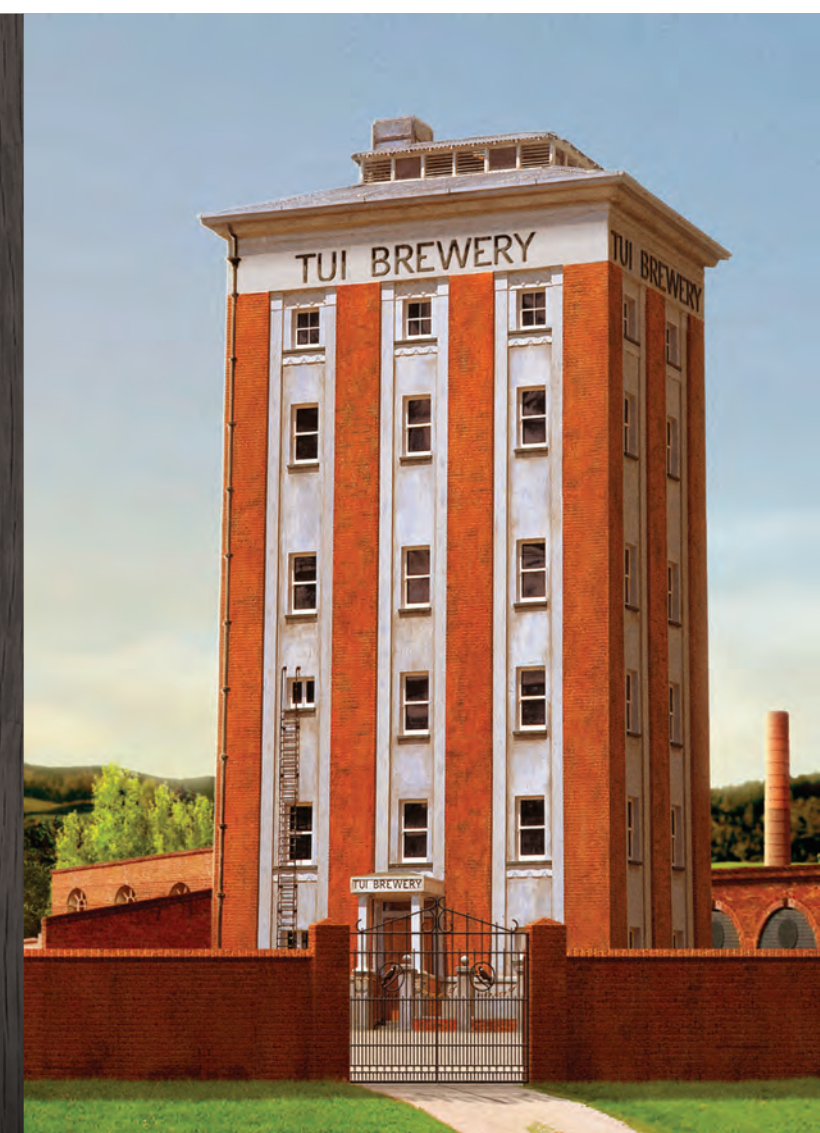
November - April:
Sunday - Thursday: 11am-5pm
Friday - Saturday: 11am-6pm

May - October:
Sunday - Thursday: 11am-4pm
Friday - Saturday: 11am-5pm

TUI BREWERY, MAKE US YOUR NEXT ROAD TRIP PITSTOP.

- DAILY BREWERY TOURS
- EXCLUSIVE BEERS & TASTINGS
- KITCHEN & SHOP
- FREE HISTTUI MUSEUM
- FUNCTIONS & CONFERENCE SPACES

For more info contact the team at Tui Brewery
+64 (0)6 376 0815 TEAM@TUIHQ.CO.NZ
WWW.TUIHQ.CO.NZ





Wellington

The self-professed beer capital of New Zealand, Wellington is a vibrant and compact city bursting with culture. It's a definite must-do on the New Zealand Ale Trail.

PHOTO: Julian Apse



One of the earlier Wellington craft breweries, Black Dog Brew Co was formed in 2011 to create interesting alternatives to beers already on the market. The small 600L brewery which moved from its original

home on Blair St to new digs on Cuba St in 2018, has found a happy new home in the culinary, creative (and brewing) soul of Wellington.

This small brewery is essentially "ground zero" for the brand, with every Black Dog beer in production having been developed on this little kit by a small team of part-time brewers, before being up-scaled and contract brewed in meaningful quantities at larger breweries to satisfy national demand. This leaves the brewery free to experiment with new styles and ingredients without the constraints and pressures of maintaining large production schedules.

The new brewery, tasting room and growler filling station for takeaway beer is located on the ground floor of a small 1920's building with a cozy, intimate bar space upstairs which stays open right through to the small hours. With an established core range of beers as well as a constant stream of experimental and seasonal releases coming out of the brewery, Black Dog's 16 taps are filled with a showcase of current brews as well as a glimpse of things to come. Each week there is something new to try, from Pale Ales, IPA's and Stouts to Kettle Sours and everything in between. Be sure to take advantage of the tasting trays - flights of 6 or 8 beers for an overview of what the team have been up to. The only problem is deciding which beers not to taste on your first visit.

The two level setup makes Black Dog ideal for brewery tours, group bookings and private functions with patrons enjoying some of the freshest beer in Wellington, right in the shadow of the brewery. The beer offerings are complimented by a pizza & platter menu as well as a constantly changing cheese menu, sourced from some of the smallest independent cheeseries in New Zealand you will never see in the supermarkets.

A WORKING BREWERY IN THE HEART OF WELLINGTON

WE ARE OPEN
TUESDAYS - SUNDAYS



YOU CAN FIND US ON INSTAGRAM, FACEBOOK AND TWITTER: BLACK DOG BREW CO

Come see us at 216 Cuba Street, Te Aro, Wellington

For reservations, beer tours or any questions, Please contact us by Email guarddog@blackdogbrewery.co.nz or call 04 801 8491



Mean Doses, Wellington

The Fork and Brewer is an institution in Wellington. It took out the title of Champion Small Brewery at the 2018 New Zealand Beer Awards. And it easy to see why. Head brewer Kelly Ryan (better known as 'Brew Jesus') makes a mind boggling range of 40+ beers ranging from easy drinking lagers through

to Barrel aged sours and Double IPAs.

Black Dog Brew Co. was conjured up and cross bred in the heart of Wellington in 2011 to introduce new breeds of brewing with expermental and limited edition ranges. Check out their central city bar and fillery.



Black Dog Brew Co, Wellington



So you're thinking of coming to Wellington? Great news. *Good decision.* You're clearly someone of taste and significant personal charm.

Here in the Capital we have a lot of talented people making a lot of craft beer. Most of it is pretty good, but some of it is downright excellent and I've just been paid money to tell you three reasons why you should choose Mean Doses over the competition. Here goes:

Firstly, our beer is extraordinary. It is literally better than other beer.

Secondly we have this wicked design aesthetic, this whole 80s retro futurism thing. That's got nothing to do with how our product tastes, but you have to admit it's rad.

Thirdly and most importantly, we are a genuine small-scale family business. Dean - our brewer - was just a regular human being, or TBH not even that, until he discovered this weird talent for making delicious beer. A couple of homebrew awards and a massive bank loan later, and here we are living the dream.

Mean Doses beverages come in all (OK, most) of your favourite varieties and are available in all (OK, many) of Wellington's best bars.

Otherwise come along to our brew shop on Upper Tory Street - three blocks south of Te Papa - to meet the brewer, sample the goods and buy direct. We stock dozens of other NZ and international breweries (the good ones), so it's a smart move if you're feeling lazy or pressed for time. We have very cool merch for sale, a turntable providing the "vibes" and an incredibly tacky ceramic dog named Lassie.

We are Mean Doses - A very good brewery.

MEAN DOSES

BREWERY & FILLERY

www.meandoses.co.nz

130 Tory St, Te Aro, Wellington



Golding's Free Dive, Wellington



7 Leeds St, Wellington



Brewpub open daily from 11am for fresh beer, cider, meat and cheese boards & giant takeaway cans.

ParrotDog was started in 2011 by two guys called Matt who were into homebrewing. Today, ParrotDog occupies a huge space in the centre of Wellington with a tastings room and a fillery attached. In 2018 they were crowned Champion Medium Brewery at the New Zealand Beer Awards.

Tuatara Brewery was founded by Carl Vasta, an engineer with the tastebuds of a wine critic. Using classic "Kiwi ingenuity" Carl brewed up a range of ales, porters and pilsners under the name Tuatara. The Tuatara is unique to New Zealand, a living fossil from the dinosaur era. You can see one in real life at Wellington's Zealandia, where Tuatara Beer sponsor's its namesake. Tuatara Brewery now brews about a million litres a year and distributes around New Zealand and even a few export markets.

Double Vision Brewing is a craft beer brewery and taproom in the heart of Miramar, Wellington. The taproom features their own special brews plus some of their mate's and neighbour's beers.

Mean Doses is brewed by Dean Moses (see what he did there). Visit them in Te Aro in the city centre.

They say "fortune favours the bold". This phrase was the inspiration for Shannon Thorpe to take the leap into his own venture brewing fresh, fun and innovative beers in 2016. Fortune Favours rescued an old industrial building to open a brewpub and restaurant Te Ara and has recently added a bar at Wellington Airport.

To find these breweries and many more, visit www.nzaletrail.com



TUATARA

BREWING CO. KAPITI COAST



At the turn of the century, Tuatara Brewery began its historical contribution to the NZ beer scene from humble beginnings, a backyard shed on Carl Vasta's Kapiti Coast farm, north of Wellington.

Carl's purpose was to brew beers that he and his mates enjoyed drinking.

Several years on, with significant growth in the NZ craft industry and two NZ Champion Brewery wins, the Brewery promise to "create memorable and uniquely Aotearoa beer experiences". With the gradual use of more NZ grown Motueka hops and Canterbury malts, the taste and aroma profiles have led to core styles evolving from traditional to distinctively Kiwi brews. Their limited and seasonal releases supplement these 'tried and true' with old and new world experimentation.

Tuatara is found in most craft beer habitats around this fair country. Otherwise, drop into their Wellington city trial brewery **The Third Eye**, or the **Brewery Tap Room** on the sunny Kapiti-Coast. Contact them prior to book a Tuatara Tasting Experience and/or Brewery Tour.

Both sites offer:

- Exclusive, experimental Tuatara brews, year round faves plus wine and cider
- Casual food and snacks
- Relaxed indoor/outdoor seating where you'll often find some errant brewers undertaking serious R&D
- A passionate and knowledgeable team keen to share the Tuatara story and beers
- Riggers to take-away your most beloved brew
- Regular gigs and food trucks check out venue Facebook for updates

TUATARA TAP ROOM & BREWERY

05 08 TUATARA EXT 5
7 SHEFFIELD STREET, PARAPARAUMU

tuatarabrewing.co.nz [Facebook](https://www.facebook.com/tuatarabrewing) [Instagram](https://www.instagram.com/tuatarabrewing)

THE THIRD EYE - TUATARA'S TEMPLE OF TASTE

04 803 3948
30 ARTHUR STREET, TE ARO, WGTN

[Facebook](https://www.facebook.com/tuatarathe3rdeye) [Instagram](https://www.instagram.com/tuatarathe3rdeye)



2x NZ CHAMPION BREWERY
2008 & 2016



FORK & BREWER
HOME OF FORK BREWCORP

42 TAPS
BANGING NEW MENU



  @FORKANDBREWER

CAPITAL PERSONALISED TOURS

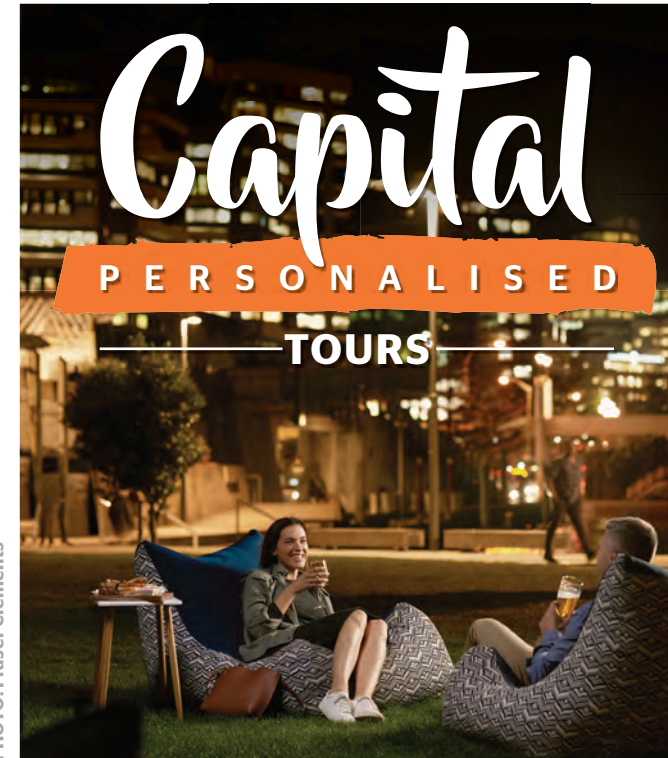


PHOTO: Fraser Clements

Capital Personalised Tours are a family owned company set up in mid-2013 to meet the increased demand for tourist services in the Capital city that showcase the best activities Wellington has to offer.

We offer private tour guides on personalised tours, showcasing all the fun activities in Wellington and Wairarapa. The tours are targeted at smaller groups and the transport used is upmarket 4WDs. We also have a 12 seater minivan that we use for larger bookings.

Our tours include Wellington Full and Half day tours, Wine, Food and Craft Beer tours and LOTR tours. We also venture out of Wellington to Kapiti, Wellington's Sunshine Coast for visits to the internationally acclaimed Southward's Car Museum and Nga Manu Nature Reserve.

Over in the Wairarapa we take in the Martinborough Wine region, the historic township of Greytown and the rustic beauty of the South Coast with Ngawi fishing village and the Cape Palliser lighthouse.

When a booking is made for a tour the vehicle is solely for your use, regardless of the numbers in your party, with your own local tour guide. Our aim is to ensure you travel in comfort and have a day to remember, filled with fun things while exploring Wellington - the capital of New Zealand.

To book any one of our day trip tours from a lord of the rings tour to a Martinborough wine tour, contact us and we will make sure it's a memorable day. From the moment we pick you up to the moment we drop you off, it's a day that is all about you.



**Showcasing
Wellington and
beyond with the
personal touch.**

Sit back and enjoy the outstand beers on offer in the Capital on our Craft Beer Tour!

Join us on full day craft beer tour of Wellington and Upper Hutt for the serious beer connoisseur. We pick you up from your choice of Wellington location at 9.30am and head north to Brewtown in Upper Hutt, visiting Kereu Boneface and Panhead brewery. Following lunch at Panhead or Boneface we take you back into the city and round the bays to Parrot Dog brewery and finish up at Garage Project.

Also offering Wellington, Kapiti, Wairarapa, Sport & Recreation Tours and much more!

+64 21 280 2406 www.captours.co.nz john@captours.co.nz

26 Pembroke Road, Northland, Wellington 6012

