

GLASS PRODUCT STEWARDSHIP

WHY

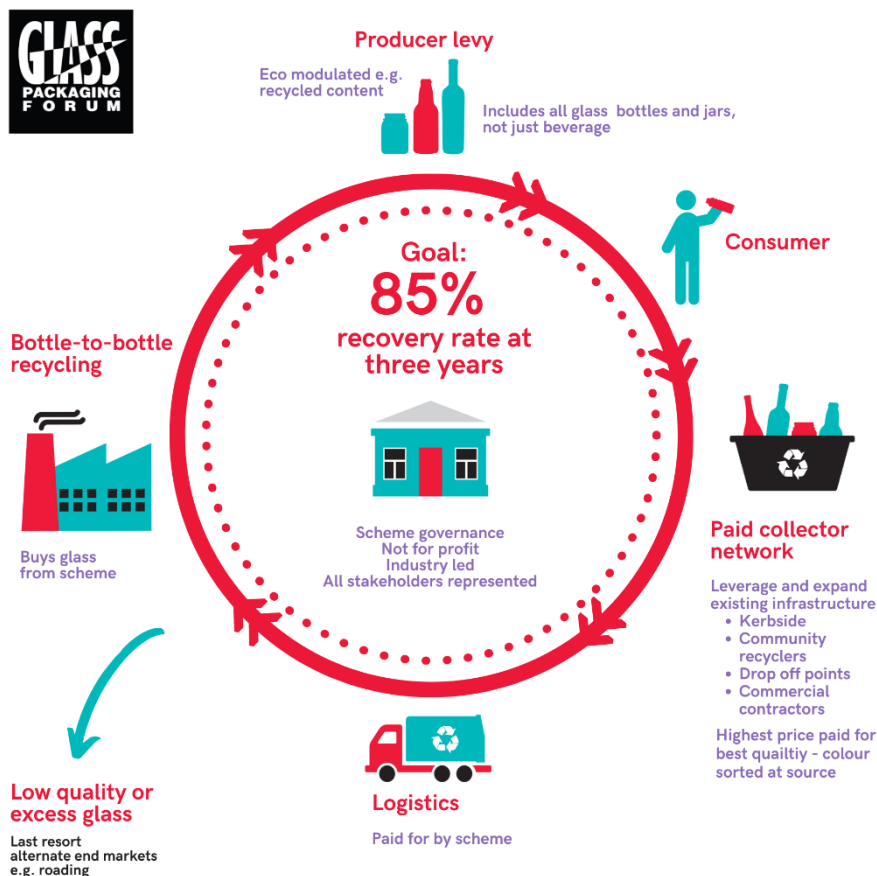
The biggest problem we face with glass recycling is that glass is, mixed and that means less of it can be recycled into new bottles. We need a system that separates glass. Consumers already want to do the right thing if it is convenient, but more education is needed about what is best.

A CRS scheme is about increasing recovery of materials not increasing recycling rates. To maximise recycling rates the scheme needs to ensure the highest possible quality of colour sorted glass is available for recycling. Maximising existing kerbside infrastructure to ensure glass is colour sorted will increase recycling capacity significantly, ensuring low-grade materials are not sent to landfill or sent offshore.

To recover a higher quality of material, enabling more glass to be recycled, we recommend a product stewardship system for glass runs alongside another system for other materials.

HOW DOES IT WORK?

1. Consumers place their container in their preferred collection system. This could be their kerbside bin, local community collector or a charity collection point.
2. Collectors are paid for the material by the scheme managers. The cost per tonne reflects a fair market rate to incentivise collection, if it's better-quality material then a higher price is paid.
3. The Scheme transports the glass to a recycler to make it into new bottles, working with the recycler to make sure the glass is collected in the best way possible for more recycling.



FEATURES

- ✓ Fully funded by Industry
- ✓ Maintains New Zealanders' current recycling habits – no change needed
- ✓ Goal of 85% recovery rate within 3 years
- ✓ All container glass, not just beverage containers
- ✓ Fully funded by producers through a levy
- ✓ Removes the burden on local government
- ✓ Reduced risk of fraud
- ✓ Industry-led, not for profit scheme manager
- ✓ Funding for infrastructure, education

WHY NOT INCLUDE GLASS BEVERAGE CONTAINERS IN CRS?

- Reverse Vending Machines (RVMs) used in CRS crush and mix glass – this isn't the best way to improve recycling.
- Some of the glass will be crushed so small it can't go through recycling machines.
- The volume of glass means machines will fill up too quickly
- Heavy and breakable for consumers to transport
- Most is consumed at home
- Excludes other glass containers like pasta sauce or peanut butter

WHO ELSE IS DOING THIS?

- Norway uses a similar model where producers pay the cost of managing the glass, and through this Norway achieves a recovery rate of over 90 per cent. This works alongside CRS for plastic.
- The top four performing countries for glass recycling in Europe (Slovenia, Belgium, Luxemburg, Sweden) have EPR-based schemes rather than CRS schemes for glass. (Oakdene Hollins)
- England & Northern Ireland have just decided to exclude glass from a deposit scheme because it won't improve glass recycling and kerbside gets better results for glass.

WHAT NEXT?

The Glass Packaging Forum has commissioned Grant Thornton to provide the cost of the scheme according to the proposed product stewardship parameters. The GPF has informed the Minister for the Environment, the Ministry and Parliament's Environment Select Committee that the Grant Thornton work is underway, and it should be considered before a decision is made on glass.